

522029

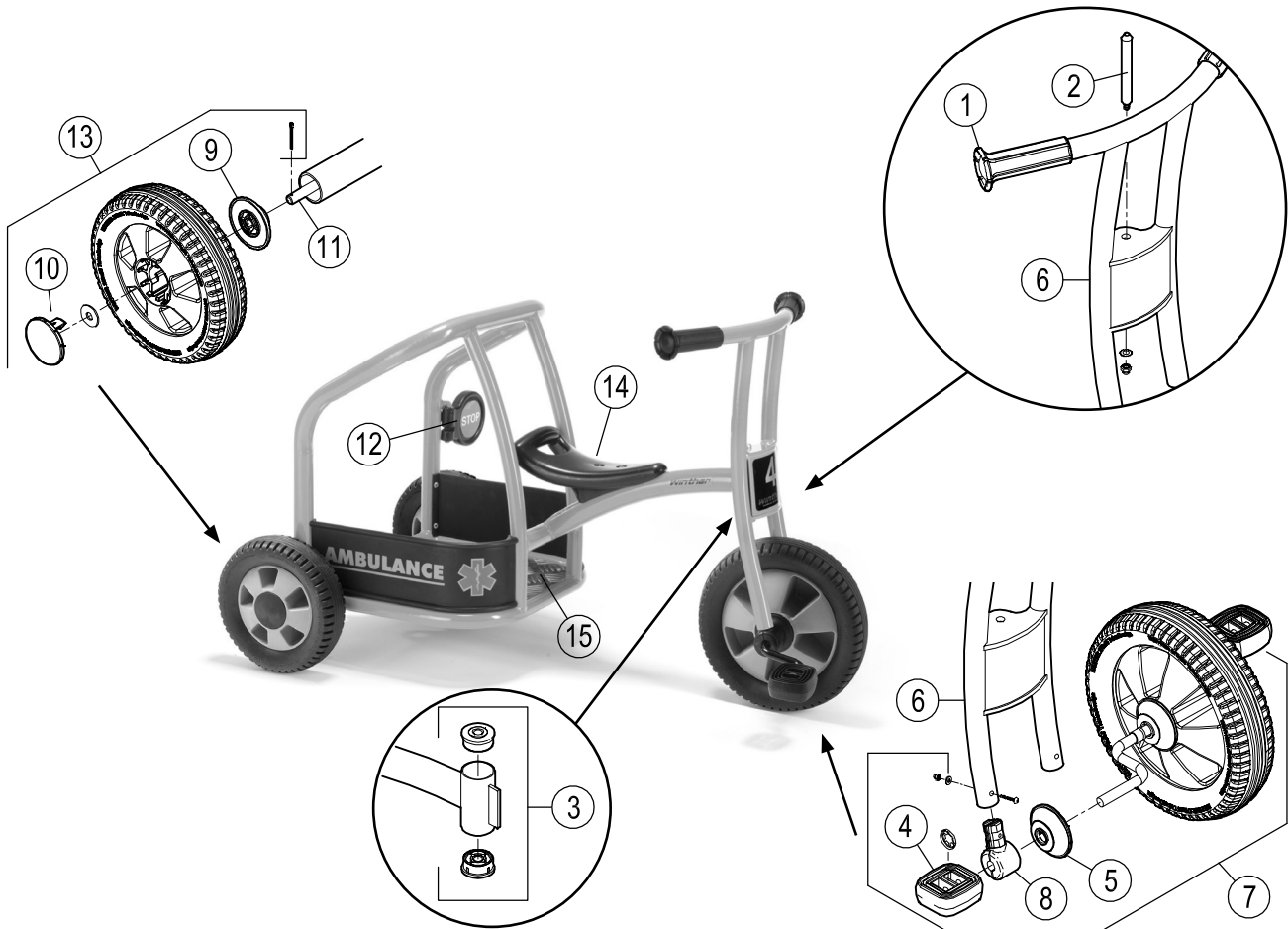


EN 71

ASTM
F963



- DK** Reservedele
- GB** Spare Parts
- DE** Ersatzteile



564.50					
Version					
Pos.	1.0				
1	525591				
2	525592				
3	525636				
4	525600				
5	720820				
6	720821				
7	720815				
8	525639				
9	720822				
10	720823				
11	720825				
12	525710				
13	720824				
14	525642				
15	525711				

